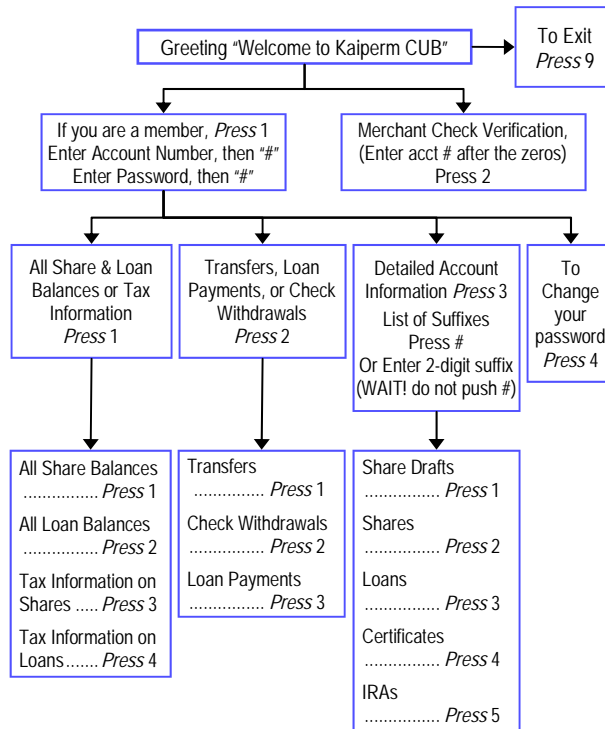


Quick Reference Call Chart

Here's a helpful chart and tips to ease you into our Kaiperm CUB Line

- The only time you use the "#" key is entering your member number, with your password and when entering amounts. It will be used again to obtain a list of suffixes if needed
- When entering a 2-digit suffix do not hit "#" afterwards, wait patiently and you will get your information
- Enter the exact amount for each transaction, including dollars and cents (for \$100.00, press 10000#)
- Pressing "8" takes you back to the main menu



Suffix Guide:

Suffix A is 21	Suffix J is 51	Suffix S is 73
Suffix B is 22	Suffix K is 52	Suffix T is 81
Suffix C is 23	Suffix L is 53	Suffix U is 82
Suffix D is 31	Suffix M is 61	Suffix V is 83
Suffix E is 32	Suffix N is 62	Suffix W is 91
Suffix F is 33	Suffix O is 63	Suffix X is 92
Suffix G is 41	Suffix P is 71	Suffix Y is 93
Suffix H is 42	Suffix Q is 77	Suffix Z is 99
Suffix I is 43	Suffix R is 72	Suffix 9 is 19